

# Trusted Intelligence Capabilities

DATA AND ANALYTICS FOR NATIONAL SECURITY LEADERS

Defense, intelligence and law enforcement agencies are operating within a rapidly evolving threat landscape. Today, intelligence analysts face exponential risks including supply chain failures and vulnerabilities, cyberattacks, geopolitical tensions, sanctions and security issues, to name a few.

To safeguard, defend and ensure prosperity, national security agencies must identify and analyze threats and vulnerabilities with accuracy and precision.

Moody's delivers actionable intelligence that can improve operational efficiency across various mission-critical activities, leveraging a solution suite comprising millions of forward-looking datapoints and insights on individuals, companies, organizations and locations.

## Bringing structure to an unstructured world

We live in a new era of Exponential Risk – RiskN. With risk types becoming increasingly complex and interconnected, their impact on national security can magnify. This new era means the old way of managing risks – as one-offs and in silos – is no longer enough. Yet national security analysts are often trying to make sense of unstructured and incomplete data when making vital decisions at pace.

Moody's brings structure to a world of unstructured data – by curating and standardizing data on major risk types that could threaten national security.

# Our leading capabilities



## SUPPLY CHAIN SECURITY

---

Evaluate the reliability, credibility, and potential risks of foreign individuals, organizations, or entities in strategic, operational, and tactical supply and logistics chains.

- Foreign ownership, control or influence (FOCI)
- Forced labor and modern slavery
- Commercial and economic security
- Critical infrastructure and technology protection



## SANCTIONS EVASION: DETECTION AND ENFORCEMENT

---

Deter and disrupt financial networks and resources of national security threats. Identify sanction evasion schemes, including ownership transfers to relatives and friends, and the creation of shell and front companies.

- Beneficial ownership mapping and visualization
- Influence assessment to reveal shell and maritime evasion trails



## COUNTERINTELLIGENCE & INVESTIGATIONS

---

Illuminate entity ownership to investigate and thwart threats from foreign or hostile entities, fortifying national security and preserving the integrity of operations and activities.

- Counter-threat finance
- Anti-money laundering (AML), fraud and financial crime
- Narcotics trafficking
- Terrorist financing
- Counter proliferation
- Entity vetting
- Network identification
- Procurement and acquisition screening
- Security clearance vetting



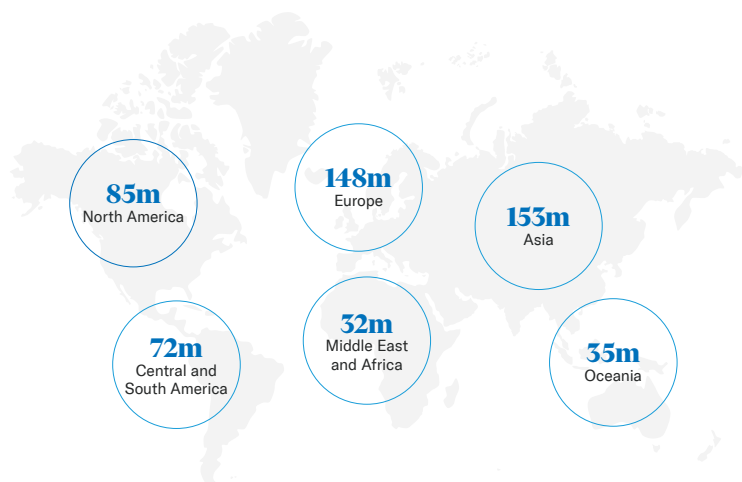
## MULTI-DOMAIN INTELLIGENCE

---

Provide intelligence on business entities, Politically Exposed Persons (PEPs), watchlists and sanctions using open source intelligence (OSINT) data to augment and enhance civilian and military intelligence activities.

- Crisis and conflict management
- Foreign interference
- Political threats
- Security Threats
- Situational Awareness
- Targeting Financial & Economic Threat

# Global, powerful and comparable data resource



Moody's comprehensive database covers over 528 million entities and companies across the globe. Our data and analytics can be used to uncover troubled connections, cross-border financial and technological flows, nefarious financial ties in an environment that demands accuracy, verifiability and speed.

Note: Figures collected June 15, 2024. Figures are rounded.

Our standardized and curated data covering firmographic, financial details, corporate hierarchies, beneficial ownership, foreign investments, merger and acquisition (M&A) activity, among others, can provide analysts with a better understanding of emerging threats and develop a competitive advantage against adversaries.



## CORPORATE NETWORKS

- Global ultimate owners (GUOs), beneficial owners, shareholders and subsidiaries
- Company tree diagrams
- Direct and indirect ownership
- Influential personnel



## RISK-RELEVANT ACTIVITY

- Sanctions and watchlists
- Enforcement actions, violations, penalties and fines
- Political Exposed Persons (PEPs) and state actors
- Negative news



## ADVERSE MEDIA SCREENING

- Real-time news and information from around the globe
- Company tree diagrams
- Broadcast transcripts; television and radio
- Important company events; corporate actions and legal events
- Sentiment analysis
- Early warning signals for security related activity



## MERGER AND ACQUISITION (M&A); FOREIGN DIRECT INVESTMENT (FDI) ACTIVITY

- Global deal data
- Venture capital and private equity deals
- Initial public offerings (IPOs)
- Joint ventures
- Greenfield foreign direct investment (FDI) projects
- Cross-border mergers and acquisitions (M&A) deals



## PATENT AND INTELLECTUAL PROPERTY (IP) HOLDINGS

- Global patent filings
- Insights into Research and Development (R&D) investment and technological trends
- Innovation strength
- Patent and portfolio valuation
- Patent transactions
- Patent applicants, inventors, and owners

# More than a data provider

Construct powerful risk analysis tools to evaluate security risks at pace and with precision.

Amid interconnected risks and an ever-evolving threat landscape, detailed threat analysis is more imperative than ever.

Moody's combines its extensive curated intelligence with leading analytic capabilities to enable detailed cross-risk threat analysis on individuals and entities – helping you to expose potential combinations, and access actionable intelligence and insights for mission-critical activities.



**NETWORK  
VISUALIZATION**



**POWER, CONTROL  
& INFLUENCE  
ANALYSIS**



**SANCTIONED  
BY-EXTENSION  
INDICATOR**



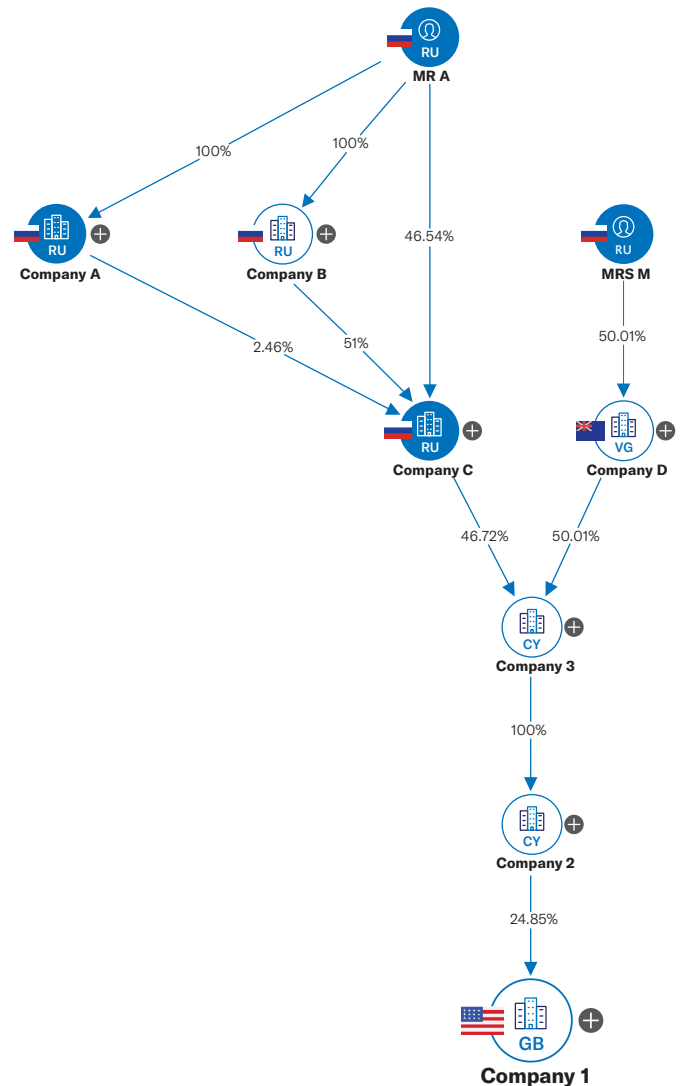
**SHELL COMPANY  
ASSESSMENT**



**STATE-OWNED  
ENTERPRISES &  
STATE ACTORS**

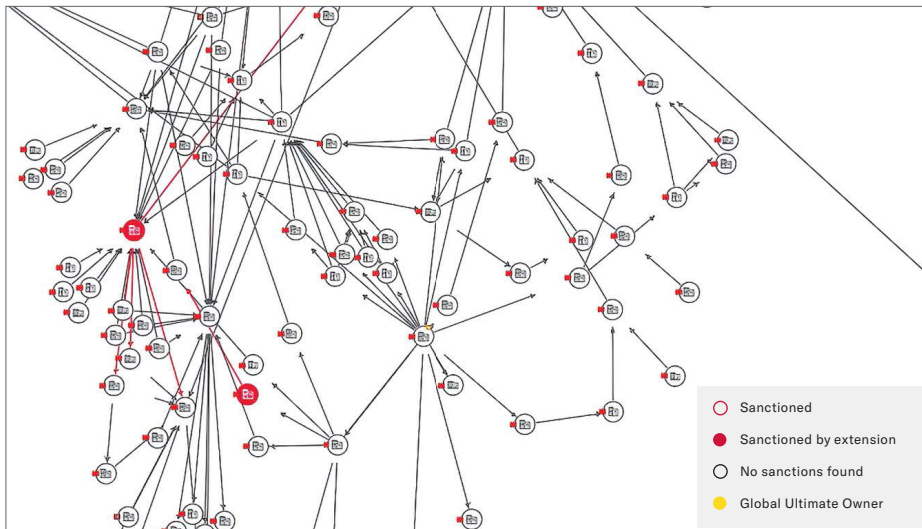
## Our capabilities in action

The depth and breadth of Moody's ownership data enables national security analysts to assess complex corporate structures and identify beneficial owners of a company. Our data has been used to identify sanctioned individuals who attempt to evade penalty by owning less than a 50% stake of a company (directly or indirectly) and yet control key decisions through hidden coalitions.



**We provide more  
hierarchy linkages  
than any other  
global dataset with  
over 1.9 billion  
ownership links**

## TRUSTED INTELLIGENCE CAPABILITIES FOR NATIONAL SECURITY



Our data visualization tools can help bring clarity on the intricate networks and connections of multinational corporations. They help identify foreign entities that could potentially threaten national and economic security by hiding their ownership stakes to infiltrate global markets for their strategic gains.

## Reduce time to decision



### FLEXIBLE

Standardized data and intelligence eases OSINT integration and dissemination across organizations

- Proprietary platform access
- Application Programming Interface (API) access
- Data feeds



### ADVANCED

The breadth and depth of our data and analytical capabilities provide actionable intelligence for more informed, and faster decision making



### ROBUST

Moody's provides an expansive and holistic view of security risk - enabling you to choose a single partner for news and data aggregation

# MOODY'S

## To Advance...

Safety



Security



Prosperity



Learn more: [www.moodys.com/publicsector](http://www.moodys.com/publicsector)

## We Provide:

Rigorous  
data



Actionable  
insight



Trusted  
intelligence

